

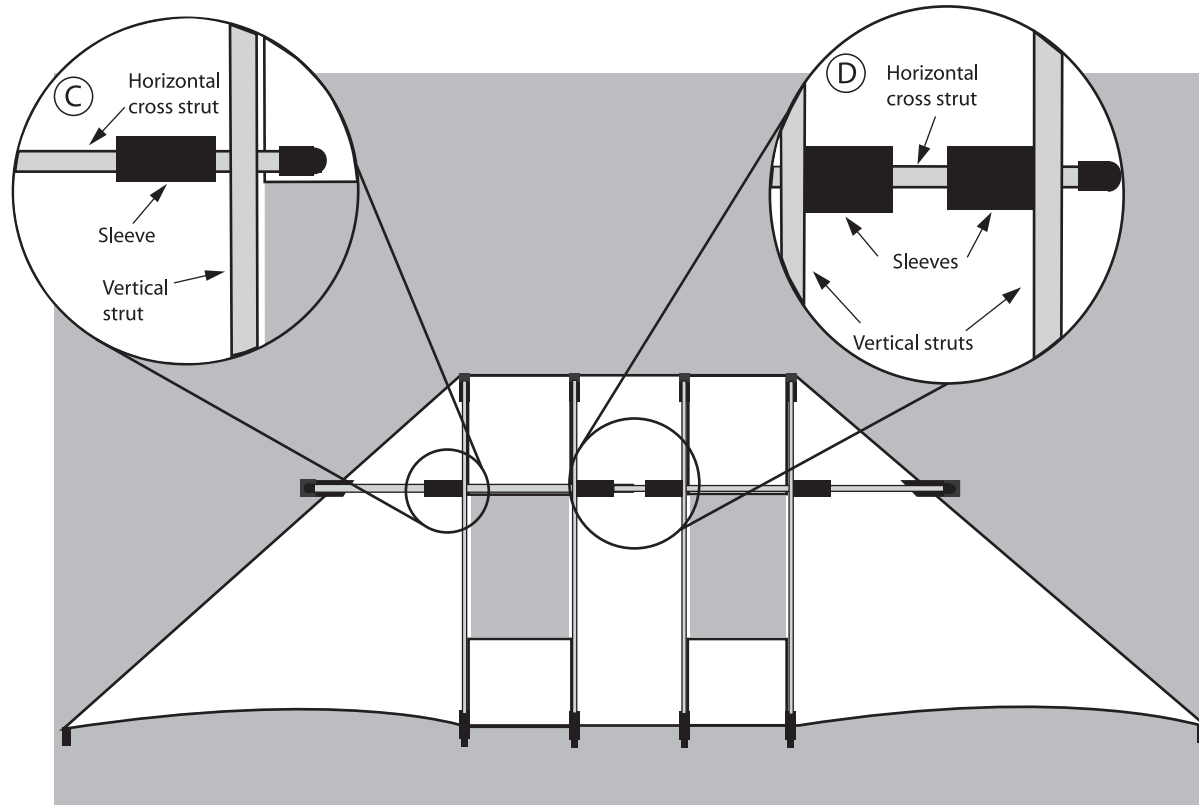
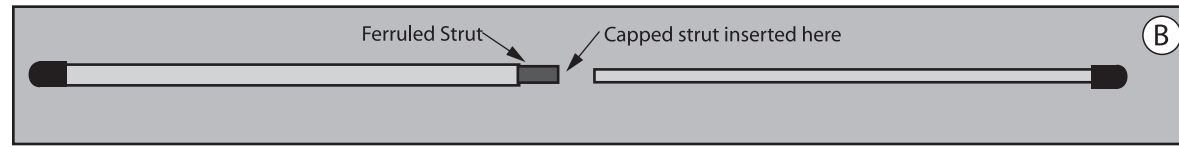
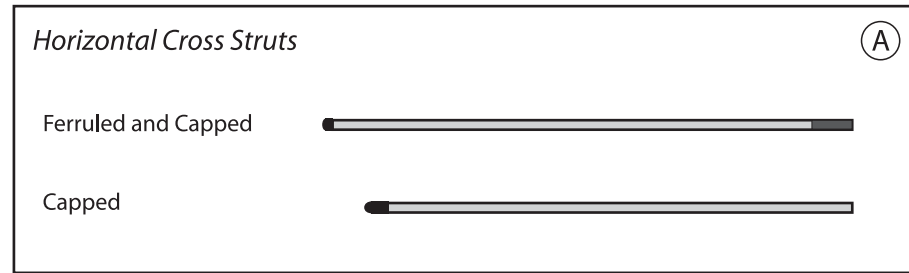
SWEPT WING DOUBLE BOX DELTA assembly instructions

Step 1:
Unroll the kite.

Step 2:
Identify and organize struts. (Diagram A.)

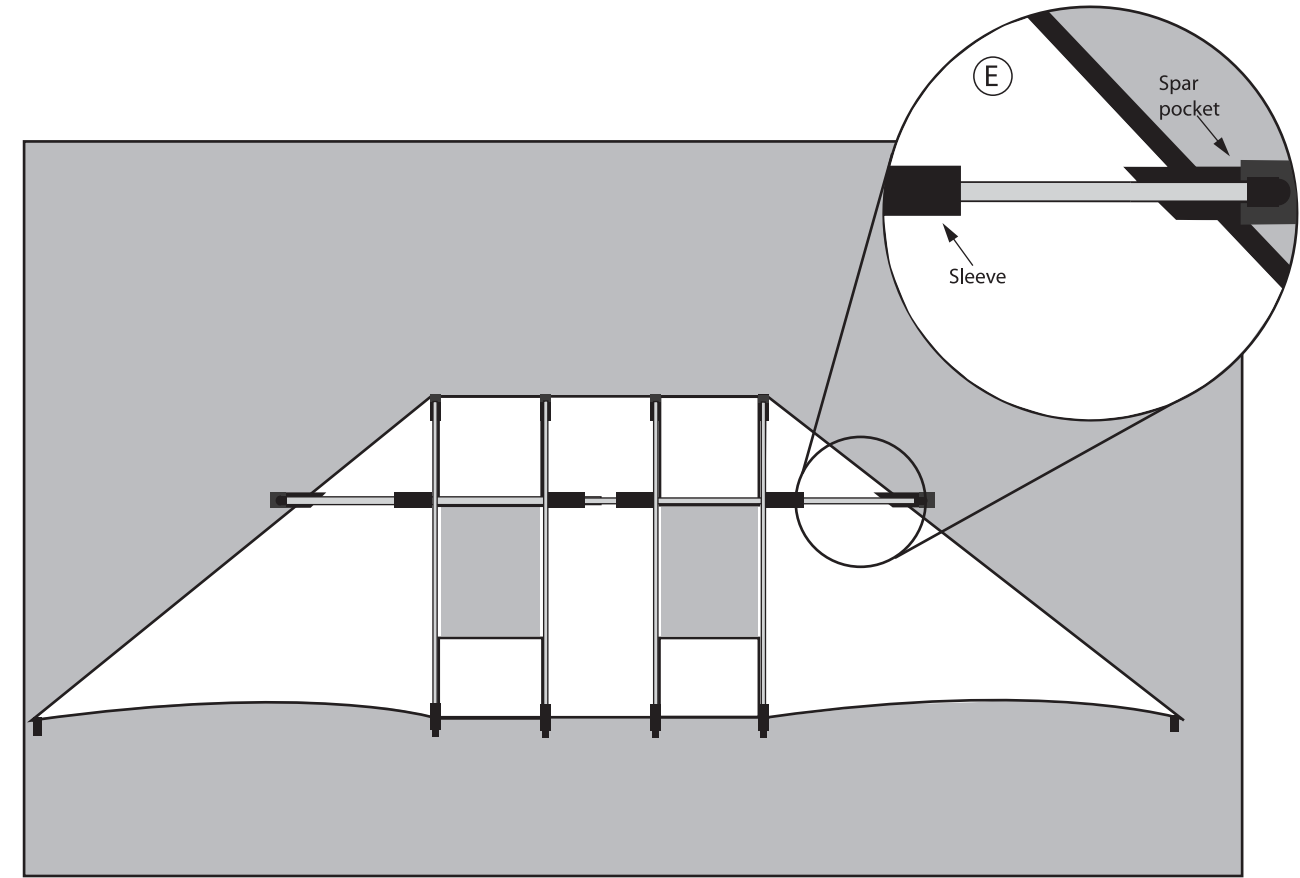
Step 3:
Assemble the horizontal cross struts.
The ferruled strut should be inserted into the capped strut. (Diagram B)

Step 4:
Starting on one side of the kite, slide the assembled horizontal cross strut through the black sleeves and underneath the vertical struts. (Diagrams C & D)



Step 5:
Insert the capped ends into the spar pockets. (Diagram E)

Kite should now be ready to fly.



FLIGHT INSTRUCTIONS:

- Attach flying line to Tow Loop.
- Have a friend stand about 75 ft. downwind from you and hold the kite with its Leading Edge pointed towards the sky.
- As the wind catches the kite, signal your friend to release it while you bring in the line with long steady pulls.
- Slowly let out more line as the kite flies upward.

RECOMMENDED LINE: 250 LB TEST LINE

OPTIMUM WIND CONDITIONS FOR SWEPT WING DOUBLE BOX DELTA

BEAUFORT SCALE	CALM	LIGHT AIR	LIGHT BREEZE	GENTLE BREEZE	MODERATE BREEZE	FRESH BREEZE	STRONG BREEZE
	0 Calm smoke rises vertically	1-3 Direction of wind shown by smoke, but not by wind vanes	4-6 Wind felt on face, leaves rustle, ordinary vane moves	8-10 Leaves and small twigs in constant motion; wind extends light flag	14-16 Raises dust and loose paper; small branches move	20-24 Small trees & leaves begin to sway; crested wavelets form on inland water	25-30 Large branches in motion; utility wire whistle; windows rattle
[M.P.H.]	0	1-3	4-6	8-10	14-16	20-24	25-30
WIND							
				Swept Wing Double Box Delta			

Note: Wind conditions aloft may vary considerably from those found near ground level.